

# FILTERS

**F**ilter housings are constructed of reinforced polypropylene for extra durability and corrosion resistance. Installs at water inlet side of pump. Recommended for all misting applications.



## 41004 5" Compact Filter Housing

- Maximum pressure of 125 PSI
- 3/8" FNPT ports
- Uses 41008 filter cartridge
- Dimensions 6 3/4" H x 4 3/8" OD
- Includes mounting bracket



## 41008 4 7/8" Filter Cartridge

- 5 micron rated
- High particle removal efficiency
- Maximum recommended flow rate 2.5 GPM
- 1,5,10,25 micron available



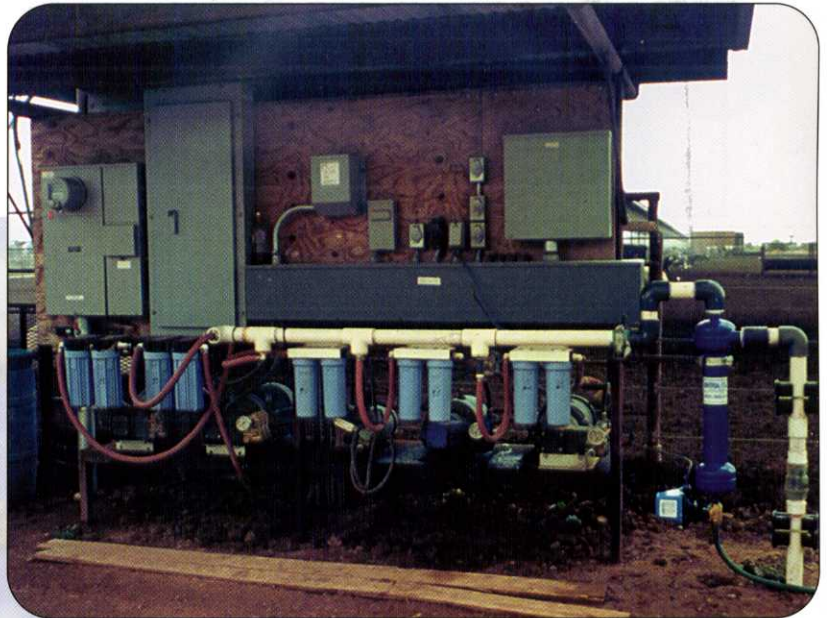
## 41002 10" Slim Line Filter Housing

- Maximum operating pressure of 125 PSI
- 1/2" FNPT ports
- Uses 41010 filter cartridge
- Dimensions 11 3/4" x 4 3/8" OD
- Includes mounting bracket



## 41010 9 7/8" Filter Cartridge

- 5 micron rating
- High particle removal efficiency
- High flow capacity low pressure drop
- Maximum recommended flow rate 5 GPM
- 1,5,10,25 micron available



## Agricultural / Industrial Filter



## 41016 In-line Filter

- 28 - 48 GPM flow rate
- 1.25" MNPT inlet/outlet
- Carbon steel construction
- Helps to protect pumps from excessive wear and loss of efficiency
- Removes sand, silt, grit, and scale - 74 micron and larger
- Other flow rates and configurations available - 3GPM and up
- 41018 Motorized ball valve purge
- 41019 1" to 1.5" Mounting bracket kit available



## 41015 10" Big Blue Filter

- Maximum operating pressure of 125 PSI
- 1" FNPT ports
- Uses 41013 filter cartridge
- Includes mounting bracket



## 41013 Pleated Filter Cartridge

Designed for the big blue filter. Pleated design for long filter life. Polyester filter media can be cleaned and reused. Thermally bonded construction for added strength.

